

# GIDEONS ELEMENTARY SCHOOL

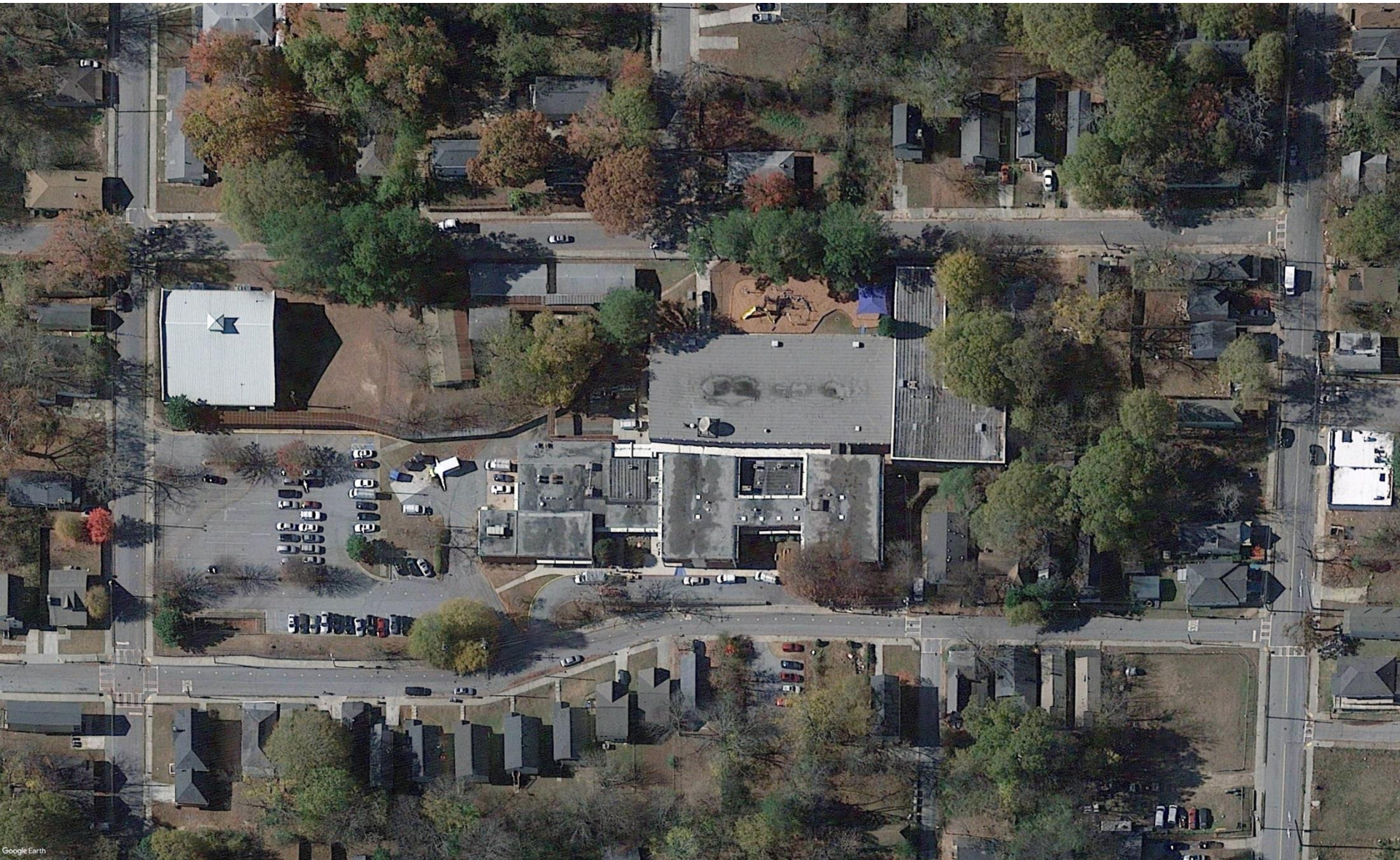
GMC

## COMMITTEE MEETING #1

10/11/17

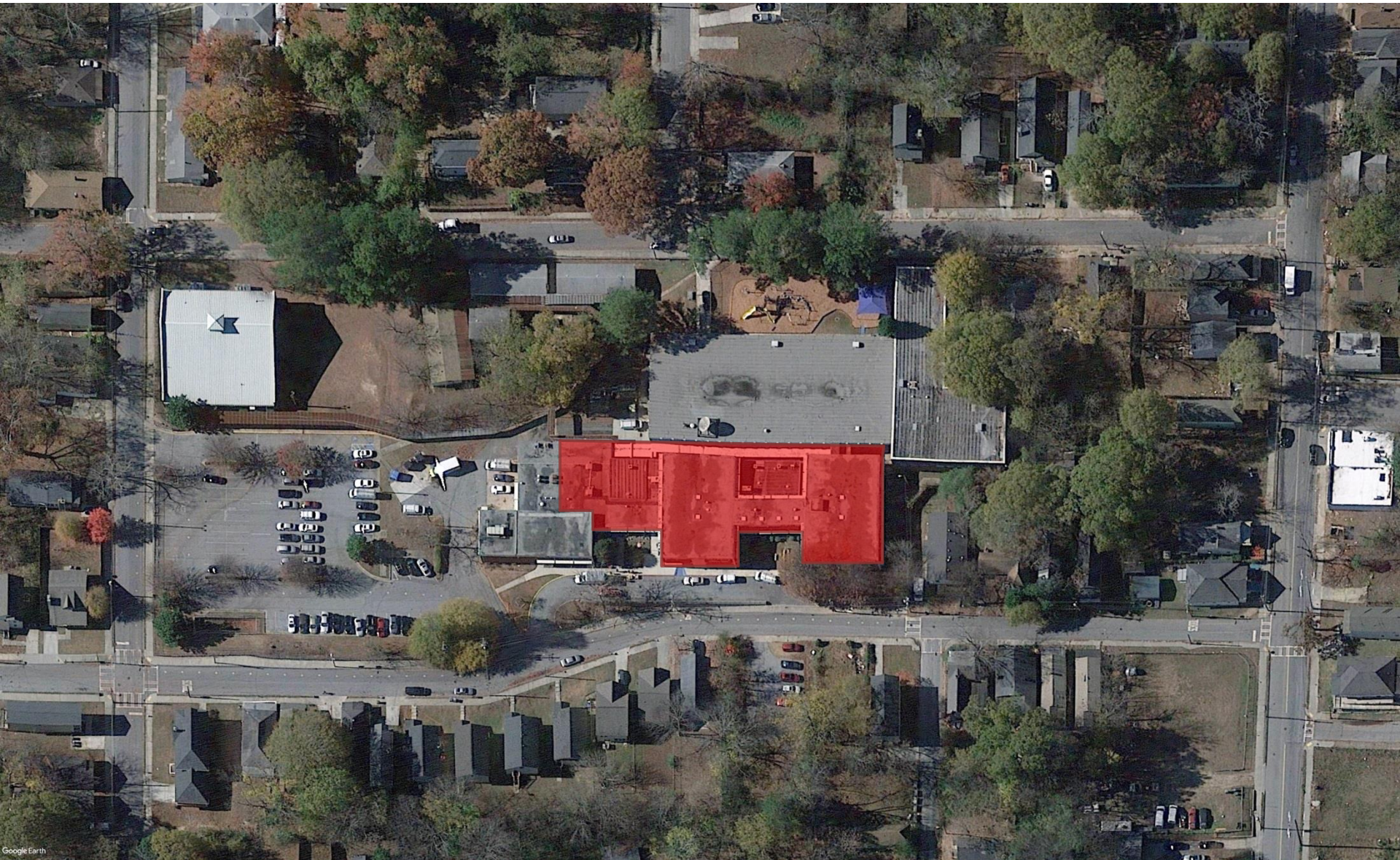


# EXISTING SITE PLAN





## SITE PLAN - BUILDING 2010 TO BE REMOVED





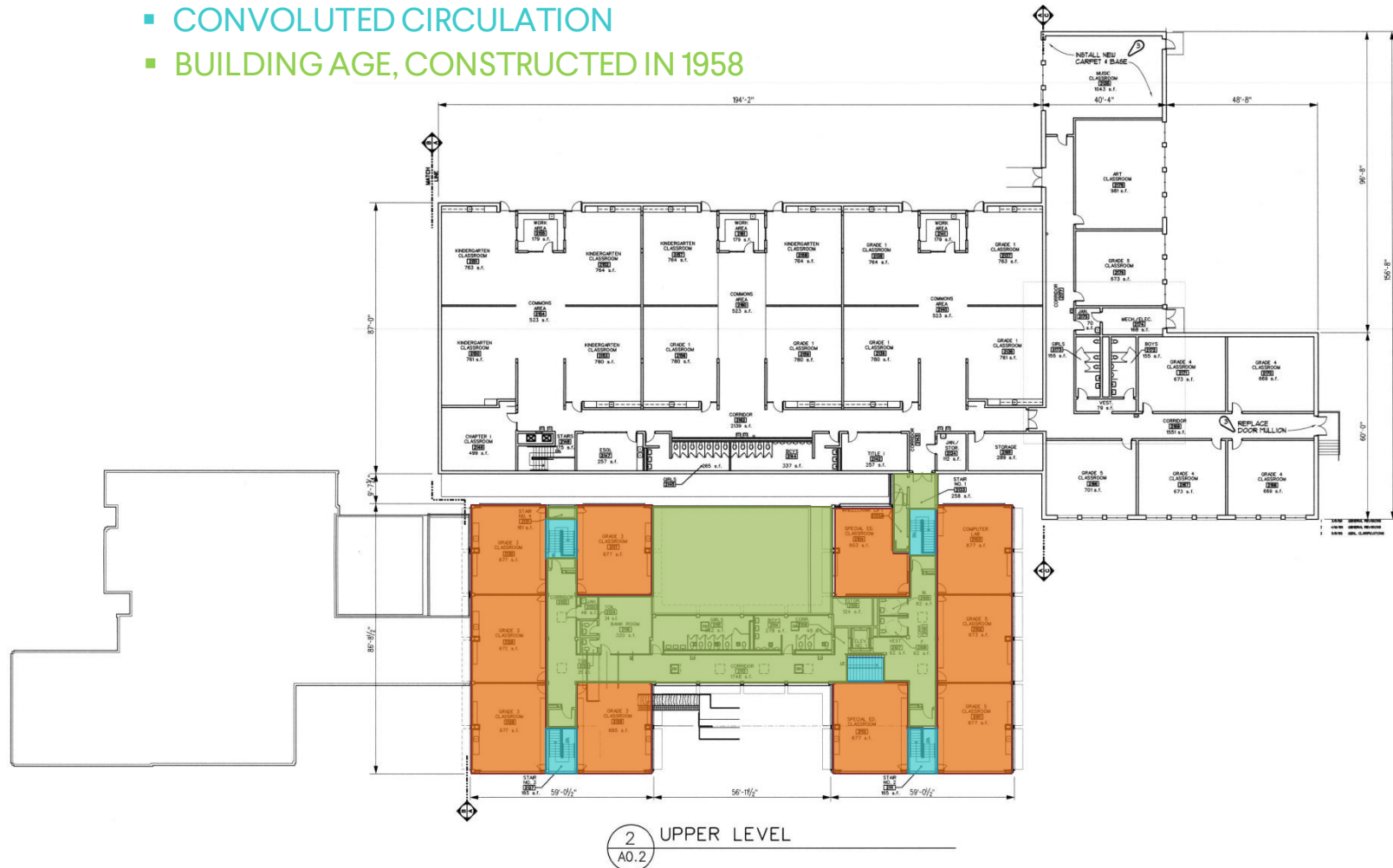
# EXISTING FLOOR PLAN

- CLASSROOMS/MEDIA CENTER DO NOT MEET GA DOE AND APS SIZE REQUIREMENTS
- CONVOLUTED CIRCULATION
- BUILDING AGE, CONSTRUCTED IN 1958

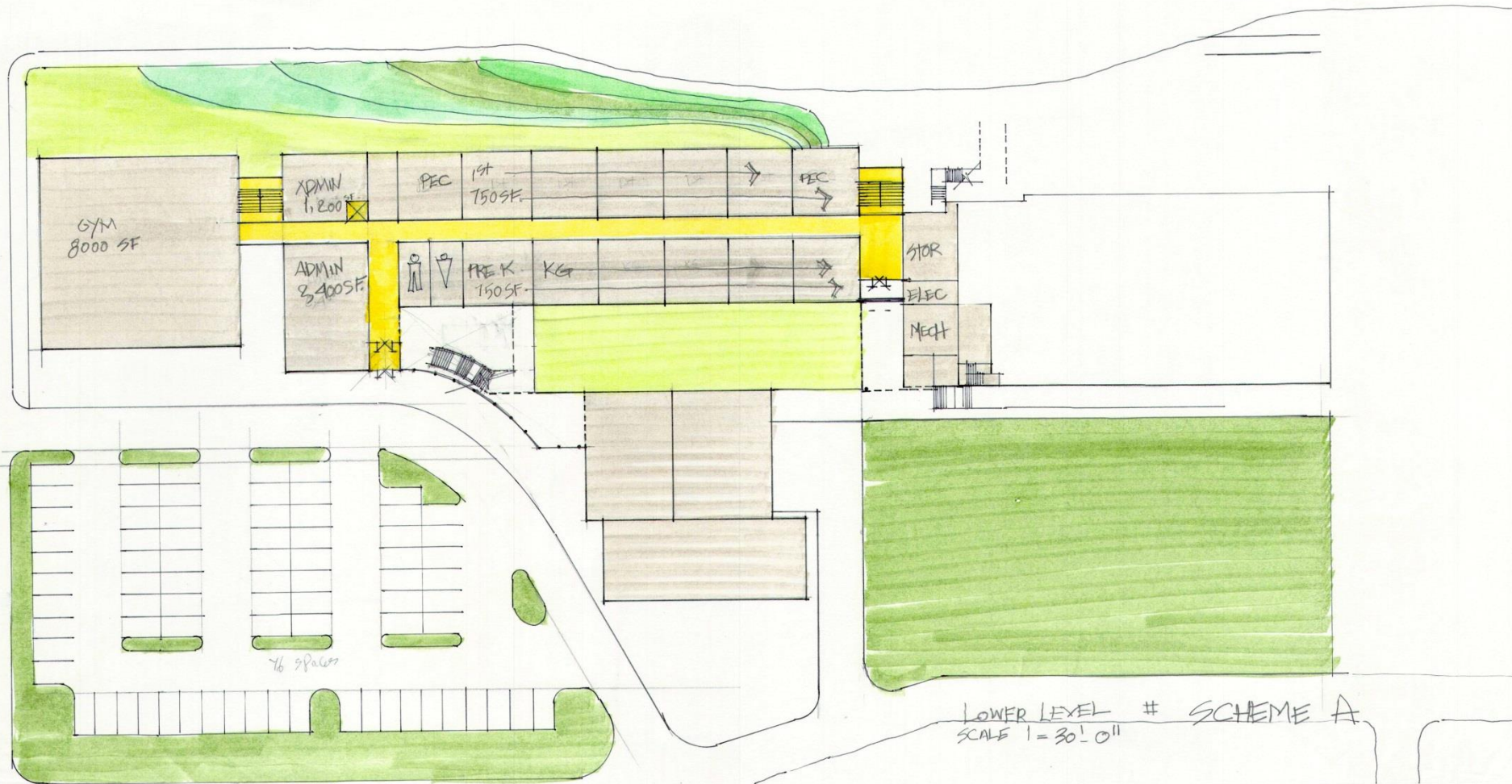


# EXISTING FLOOR PLAN

- CLASSROOMS DO NOT MEET GA DOE AND APS SIZE REQUIREMENTS
- CONVOLUTED CIRCULATION
- BUILDING AGE, CONSTRUCTED IN 1958

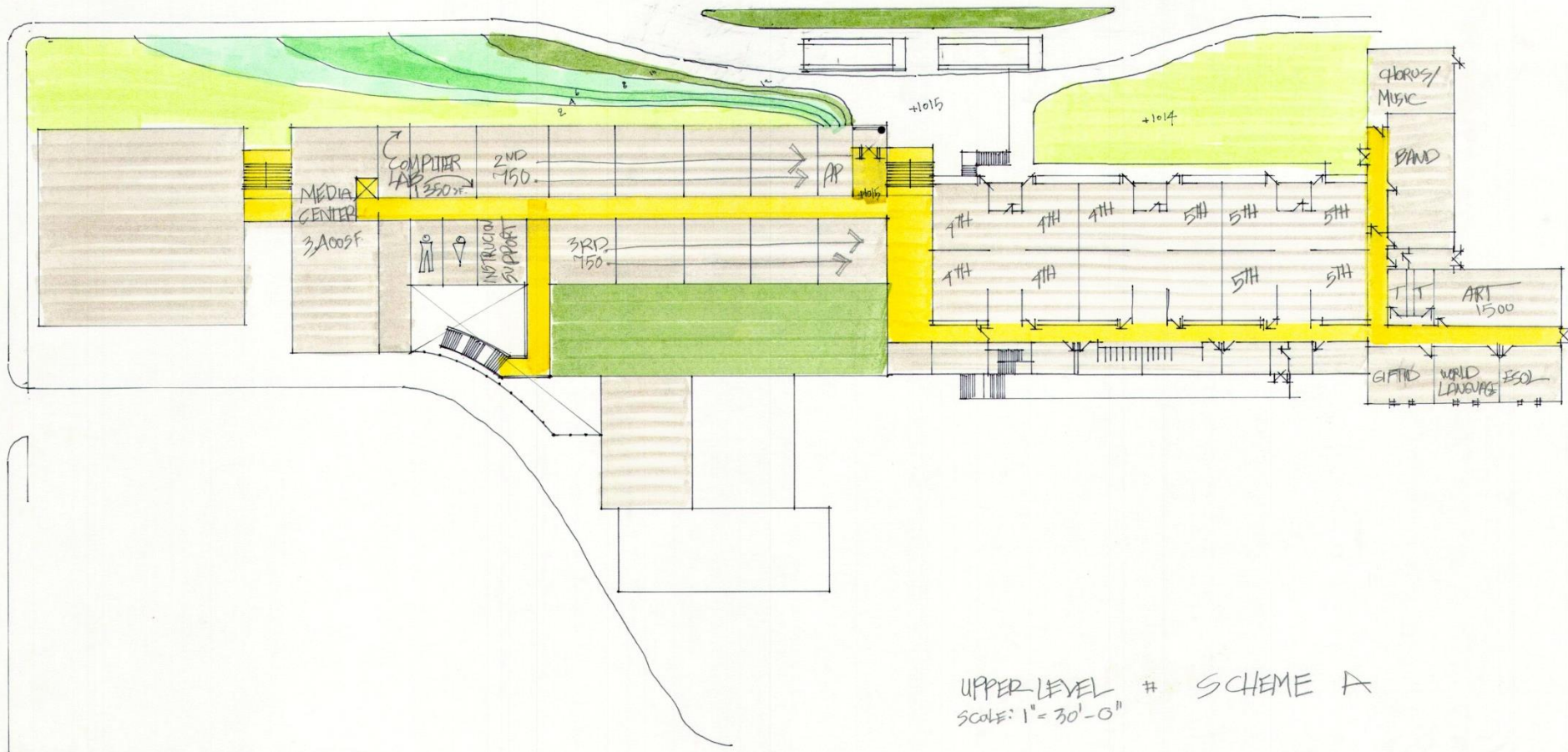


## SCHEME A – LOWER LEVEL





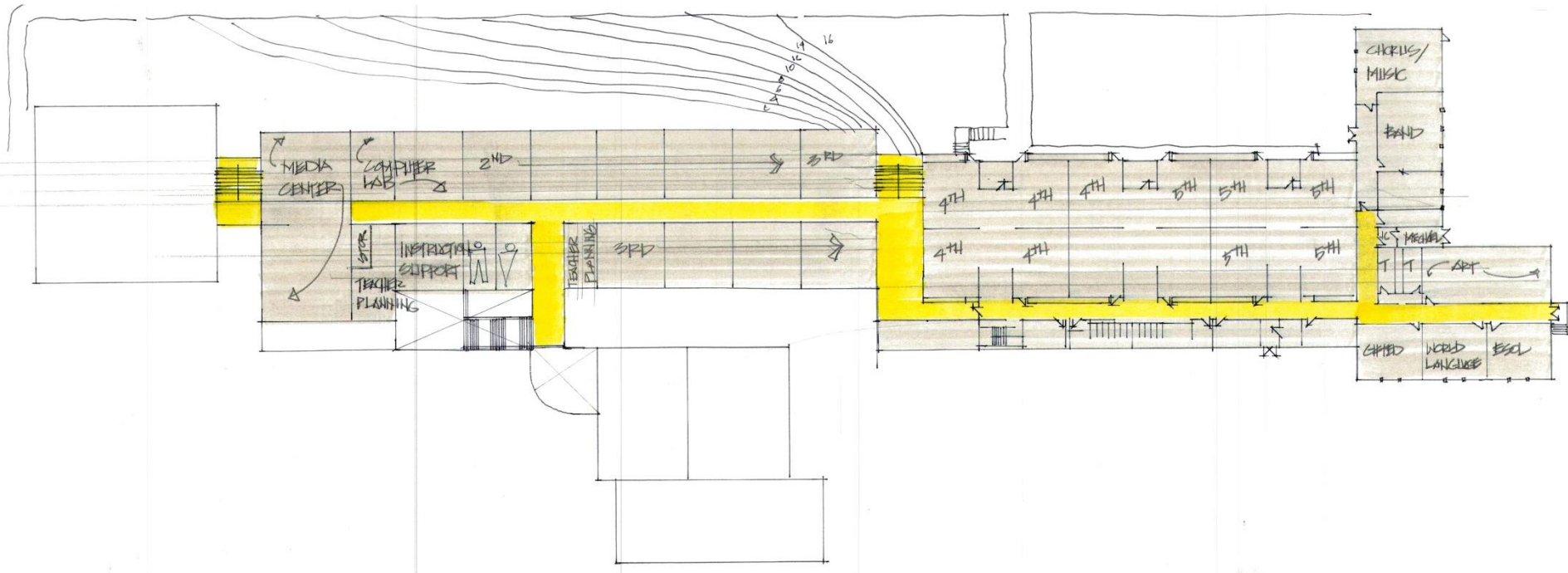
# SCHEME A – UPPER LEVEL







## SCHEME B – UPPER LEVEL



UPPER LEVEL # SCHEME B  
SCALE: 1" = 30'-0"

QUESTIONS  
?

GMC